

MEMOIRE D'UNE TRAME

Design by
Constance Frapolli

Description

The 'mémoire d'une trame' rug calls on the traditional technique of hand knotting to achieve a meticulously detailed visual effect of a macrophotographic representation of a multicoloured weave. The delicacy of the motif and the subtlety of the shade associations leave this rug wide open to individual interpretation: are they an accumulation of little houses, or stylised directional arrows perhaps?

The superposition of inlaid patterns produces an optical effect similar to an oscillating band passing across a screen or the moiré effect of a shifting optokinetic pattern.

Bleu and Brique : Hand knotted rug in 90 % wool / 10 % cotton (48,000 knots/m²). Please allow for a tolerance of +/- 3 % in terms of both length and width.

Gris brun : Hand knotted rug in 75 % wool / 25 % cotton (45,000 knots/m²). Please allow for a tolerance of +/- 3 % in terms of length and width.



MEMOIRE D'UNE TRAME BLEU.

DIMENSIONS

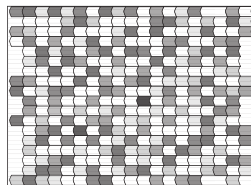
W 2000 mm - L 3000 mm -

Other sizes

Technical Specifications

More info at
www.ligne-roset.com

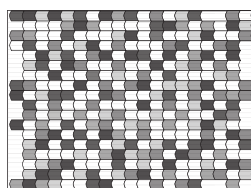
© Ligne Roset 2021



memoire d'une trame bleu.

DIMENSIONS

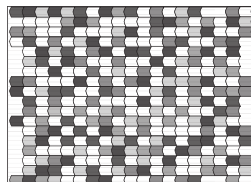
W 2000 - mm
L 3000 - mm



memoire d'une trame brique.

DIMENSIONS

W 2000 - mm
L 3000 - mm



memoire d'une trame gris brun

DIMENSIONS

W 2000 - mm
L 3000 - mm