

## R.I.G. Table

### Mikal Harrsen and Adam Hall 2012



#### Tavolo

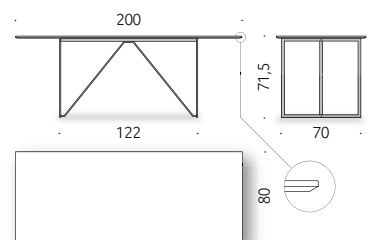
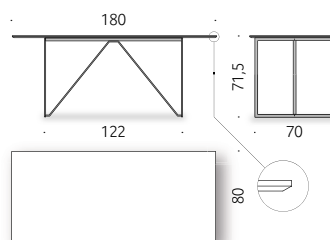
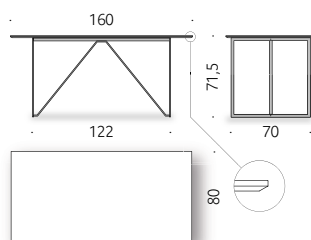
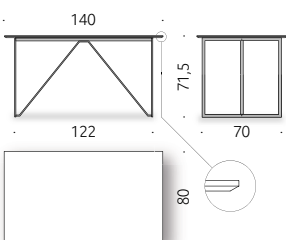
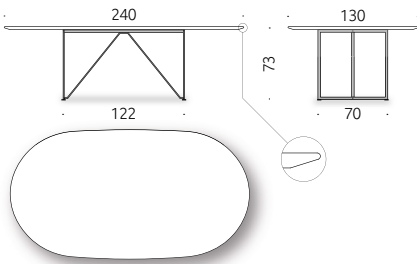
##### Materiali:

BASE: profili in acciaio pieno verniciato a polvere color nero gofrato oppure verniciato a liquido color ottone.

PIANO IN CDF IMPIALLACCIATO, CDF PLACCATO: pannello in fibre di legno ad alta densità (CDF - certificato classe E1, CARB P2 / TSCA Title VI) nero opaco, impiallacciato in rovere naturale o rovere affumicato, finito con vernice trasparente a poro aperto a base acqua o a base solvente, oppure placcato con superficie nanotecnologica Fenix NTM® "soft touch" color bianco Kos, grigio Londra o nero Ingo. Bordo nero a vista.

PIANO IN VETRO: vetro extrachiario, temperato, bordo filo lucido.

+info:  
<http://www.depadova.com/maustudio-materials.pdf>



# R.I.G. Table

## Mikal Harrsen and Adam Hall 2012



### Table

#### Materials:

BASE: profiles in solid steel, powder-coated (embossed black) or liquid painted (brass).

TOP IN CDF VENEER, CDF COATED: matt black high-density wood fibres panels (CDF - class E1, CARB P2 /TSCA Title VI certified), veneered in natural or smoked oak, then finished with transparent open-pore water-based or solvent-based coating; or coated in "soft touch" Fenix NTM® (nanotechnology surface) in Kos white, Londra grey or Ingo black. Visible black edge.

TOP IN GLASS: extra clear glass, tempered, with polished edge.

+info:  
<http://www.depadova.com/maustudio-materials.pdf>

